

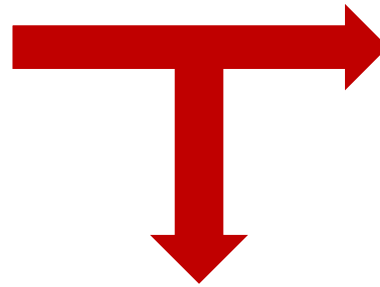
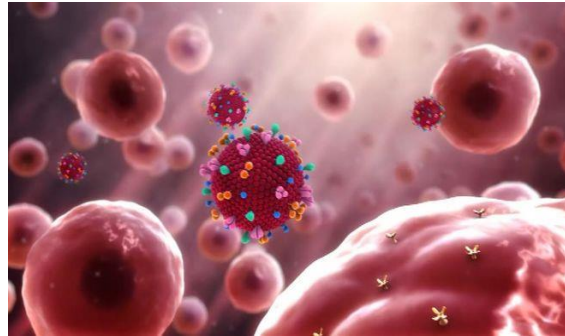
# SPANISH RED CROSS: OLD AND NEW RESPONSABILITIES IN COVID ERA

Spanish Red Cross  
Desember 2020

Cada vez más cerca de las personas



**Cruz Roja Española**



**MARCH  
2020**



**Cruz Roja Española**

**Cada vez más cerca de las personas**



**Cruz Roja Española**



care for the general population  
care for the vulnerable population

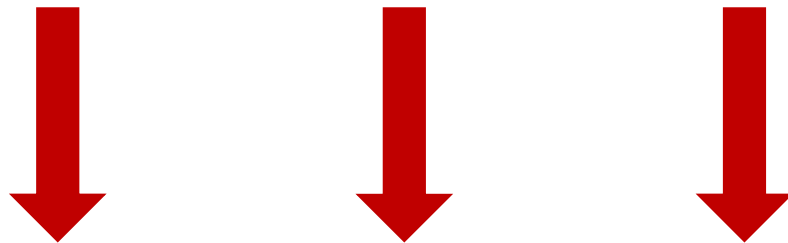


PWUD  
HOMELESS  
PRISION INMATES

**Cada vez más cerca de las personas**



**Cruz Roja Española**



The Red Cross Spain not only continued providing harm reduction materials and kept its drug consumption open but also started managing quarantine centres for people living in the street.



**Cada vez más cerca de las personas**



## **CHANGES / ADAPTATION TO PANDEMIC IN HR SERVICES:**

- Measures aiming to avoid infections: Covid's protocols;
- Try to limit contact and closeness in spaces;
- Individual covid prevention workshops
- Extend the coverage:
  - prepared food packs
  - free face masks
  - free individual thermometer
  - rapid inclusion in methadone programs
  - individual DCR access
  - shower with disinfection before and after use
  - laundry service with high temperatures



- Virtual monitoring;
- Telephone follow-up;
- Adaptation in the delivery of medication;
- Continuity in rapid tests.
- Needle exchange of material for consumption and all the paraphernalia.
- Delivery Naloxone kits to avoid overdose.



Cada vez más cerca de las personas





## LOCKDOWN SPACES:

- for people living in the street;
- guarantee of treatment or continuity and provision of nursering support;
- new hostel's stop of the methadone dispensing bus;
- emergency care assistance and medication treatment;
- link with drug treatment centers;
- overdose prevention workshops.



Cada vez más cerca de las personas



# OUR GOALS:

- MINIMIZE THE RISK OF INFECTION IN OUR CLIENTS AND IN THE GENERAL POPULATION.
- CONSIDER DUE TO THE REALITY OF PWUD, PEOPLE LIVING IN THE STREET AND PRISONERS.
- VIEW AND GIVE A VOICE TO THIS COLLECTIVE IN THIS PANDEMIC.

**Cada vez más cerca de las personas**



**Cruz Roja Española**